

HAYES INSTRUMENT Co.

502 S CANNON BLVD
SHELBYVILLE, TN 37160

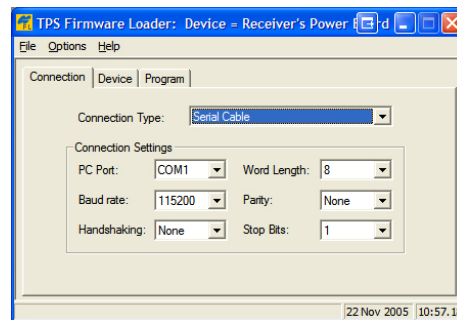
TOLL FREE: 1 800 251 1280
WWW.HAYESINSTRUMENT.COM



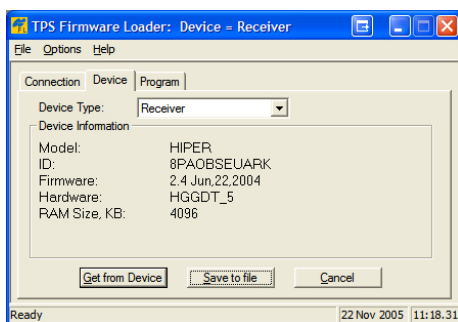
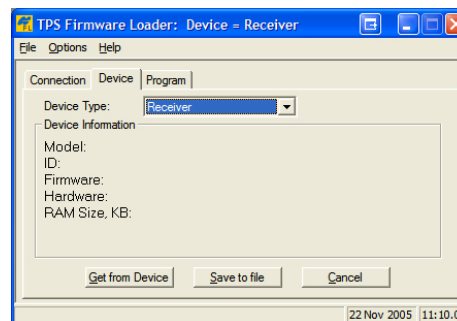
Updating Firmware on Topcon GPS Receivers from the Hayes Firmware CD

December 05

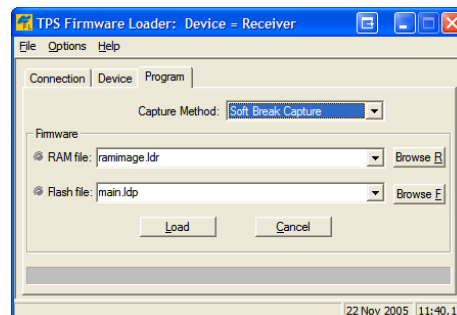
1. Connect the receiver to the serial port on computer. Firmware can only be updated through the serial connection. DO NOT use a usb connection.
2. Open Floader and confirm the settings are correct. Baud rate 115200 and Parity None

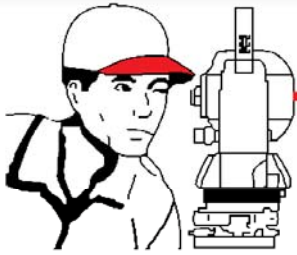


3. Click the Device Tab, Set the device type to receiver and hit Get from Device. This verifies the connection and will display the receiver information.



4. Click the Program tab. Set the capture method to Soft Break Capture.
5. Click Browse R

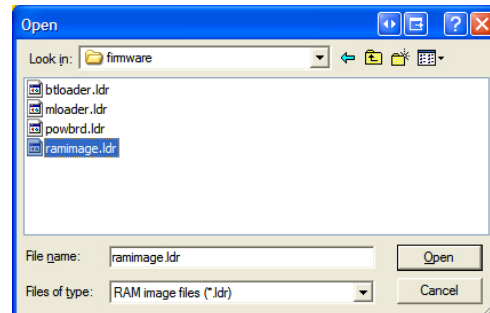
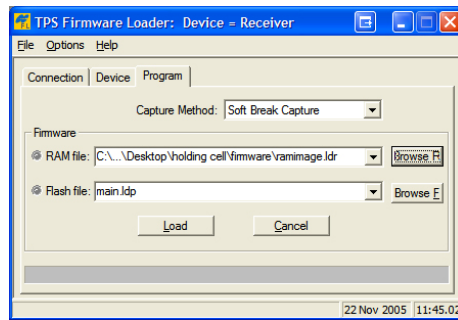




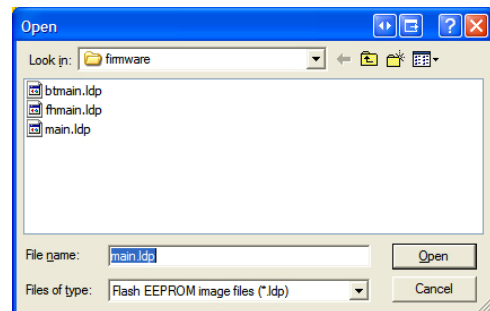
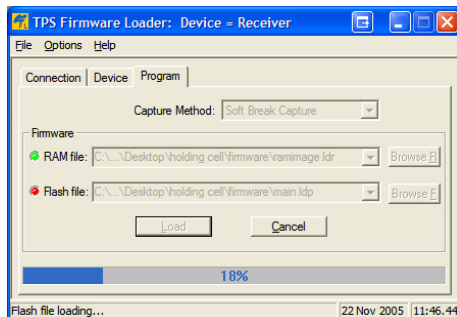
Updating Firmware on Topcon GPS Receivers from the Hayes Firmware CD

December 05

6. Set the Look in to the folder* where the firmware is located and select **ramimage.ldr** and click Open.



7. Click Browse F and select **main.ldp**. Click open.
8. Click Load and the status bar will begin to progress.



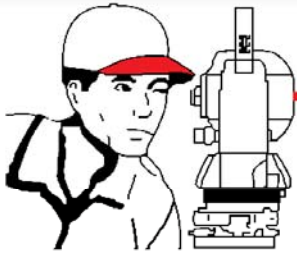
For Legacy-H/-E and GB500/1000 receivers **ramimage.ldr** and **main.ldp** are the only applicable firmware files.

For all Hipers except Lite, Lite+ and XT go to step 4.

1. Click Browse R and select **mloader.ldr** and hit Open.
2. Click Browse F and select **fhmain.ldp** (Hiper Lite/Lite+) or **uhf460main.ldp** (Hiper XT) then hit Open.
3. Click Load and the status bar will begin to progress.

* See page 4 for the receiver firmware chart.





HAYES INSTRUMENT Co.

502 S CANNON BLVD
SHELBYVILLE, TN 37160

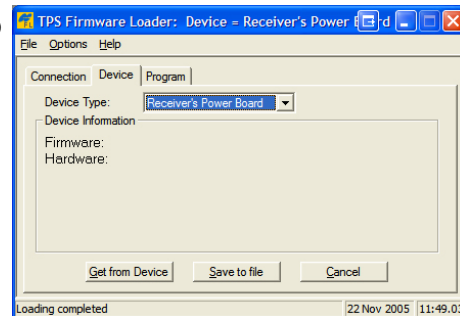
TOLL FREE: 1 800 251 1280
WWW.HAYESINSTRUMENT.COM



Updating Firmware on Topcon GPS Receivers from the Hayes Firmware CD

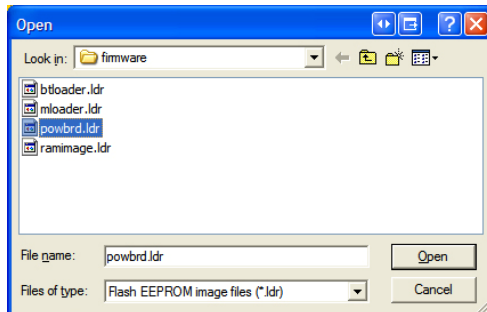
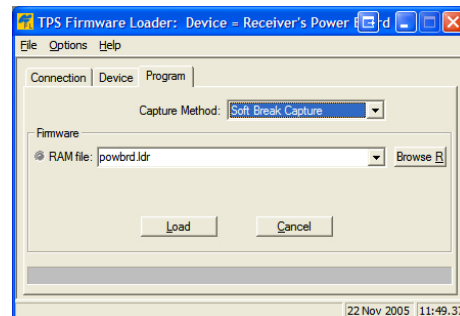
December 05

- Click the Device tab and set the Device Type to Receiver's Power Board.

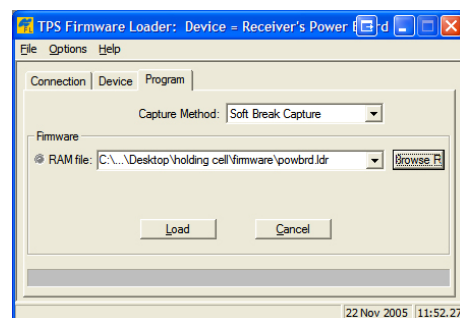


- Click the Program tab and set the Capture Method to Soft Break Capture.

- Click Browse R and select `powbrd.ldr` and hit Open.

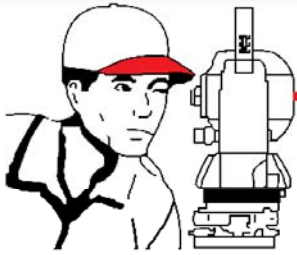


- Click Load. (The power board firmware will not take as long to load.)
- Once the loading is complete disconnect the receiver .



Connect the next receiver and repeat these steps.





HAYES INSTRUMENT Co.

502 S CANNON BLVD
SHELBYVILLE, TN 37160

TOLL FREE: 1 800 251 1280
WWW.HAYESINSTRUMENT.COM



Updating Firmware on Topcon GPS Receivers from the Hayes Firmware CD

December 05

Receiver Type	Board model	Firmware Folder	Power Board	Modem Firmware	Bluetooth Firmware
Legacy H	HE_GG	hgg	No	No	No
Legacy E	HE_GGD	heggd	No	No	No
Hiper	HE_GG	hgg	Yes	Yes	No
Hiper GGD	HE_GGD	heggd	Yes	Yes	No
Hiper +	HE_GGD	heggd	Yes	Yes	Yes
	HGGDT	turbo*	Yes	Yes	Yes
Hiper Lite	HE_GDL	hgdl	Yes	Yes	Yes
Hiper Lite+	HE_GGDL	heggdl	Yes	Yes	Yes
	HGGDT	turbo*	Yes	Yes	Yes
Hiper Pro	HGGDT	turbo*	Yes	No	Yes
Hiper XT	HGGDT	turbo*	Yes	Yes	Yes
GB500/GB1000	HGGDT	turbo*	No	No	No

*The Turbo folder contains subfolders with the accessory firmware specific to the receiver type.

